

EnsureDR Quick Startup Guide for VMware SRM

Ver:1.0 - 11/25/2021

EnsureDR is a software solution that makes sure your data recovery (DR) site works when you need it. By running automatically every few days, DR testing is performed and used to reveal issues that need to be addressed - therefore keeping the business up to date with its DR state. EnsureDR supports DR solutions (data movers) such as Carbonite replication, Zerto, VMware SRM, Netapp, Veeam, Cohesity, Recover Point, Azure ASR, and more.

Documents description

In this quick startup guide, you will learn how to quickly set up the EnsureDR job to test VM's health check status using your data mover in your DR environment. For advanced features please refer to the full user guide. Please follow the instructions, and if you need additional help please contact support@ensuredr.com.

Prerequisites

To make EnsureDR works properly, there are a few prerequisites to set up in advance.

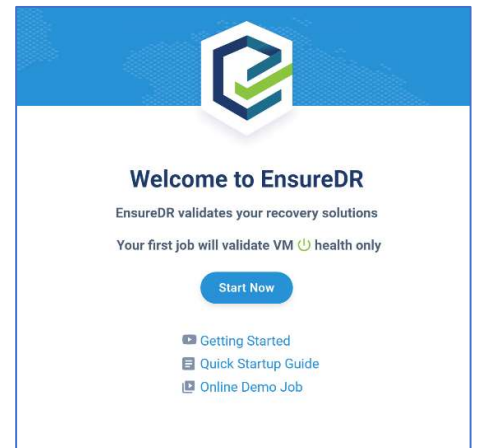
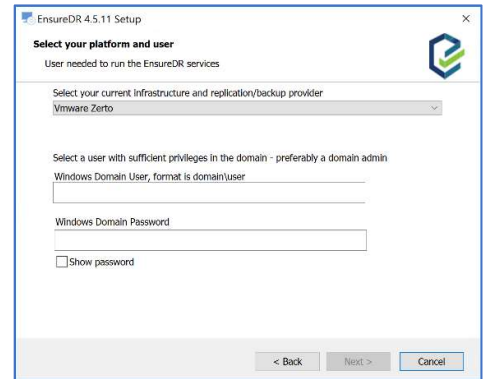
Servers and Console	One server with Windows 2016/2019 with 16 GB mem, 4 CPU, 250 GB disk, single NIC. EnsureDR management VM (EDRM) should be located on the DR location of a testing environment. The latest VMware VM tools must be installed on EDRM server and assigned a static IP. Server must have only a single NIC. Correct time zone should be set for the machines. Server should be joined to a domain.
Credentials	Domain account which is the local administrator on the EDRM server. VMware vCenter user which has administrator rights.
VMware SRM	To avoid any duplicate IPs in your environment, please validate that your VMware SRM replication plans are properly configured with the test networking settings to run inside an isolated/bubble network on the DR site before starting the job from the EDRM.
Firewall	Port 443 needs to be open from the main EnsureDR management server (EDRM) to the source and target VMware vCenter servers. Port 443 needs to be open from the main EnsureDR management server (EDRM) to the source and target VMware SRM servers. Port 443 needs to be open from the client workstation to the EDRM server. SMTP port should be open for the reporting, from the EDRM server to the local mail server. Usually, the SMTP port number is 25 but can be different. Please ask your mail administrators for the correct port number.
Antivirus	If you have Antivirus software running inside the EnsureDR management server, add an exclusion for API.exe and EDRunner.exe.
Reporting Mail	SMTP mail service available for the EnsureDR server to send the report via mail such as local exchange or Office365/Gmail.
Supported Version	VMware SRM version 8
Supported Browser	Google Chrome

Setup

Prepare a server VM with a clean install of Windows server 2016/2019 (as described in the prerequisites table).

EnsureDR manager setup

1. Log on with the service account you created in advance as described in the prerequisite document.
2. Run the EnsureDRSetup.exe file as an administrator on the server you created upfront.
3. Choose your data mover type and set a domain user credential that has local administrator rights on the EDRM server.
4. Set up the default location for the installation, accept the license, and then install the product.
5. Wait until the installation is finished; which depending on the environment and components, may take a few minutes to complete.
6. Save provided link for future access (used in steps below).
7. When the installation is finished, restart the EDRM server.



Creating the first job

1. Open the Google Chrome browser and navigate to the link you saved in the previous step
2. A welcome message pops up in the browser, click on "Start Now".
3. Create a job in the next four simple steps.
4. Fill in the necessary information in the first step.
 - Enter a job name
 - VMware environment details for source and destination vCenter.
 - VMware SRM data mover details for source and destination hostname.
 - Workflow user, domain user with elevated privileges on Windows local servers, and Linux user with proper privileges on servers added to the job.
5. On the second step, network configuration, press next.
 - Relevant for advance jobs only
6. For the third step, EnsureDR will fetch data from your VMware SRM data mover by collecting the Recovery Plans.
 - Select the desired servers that you want to test, right-click to move this server in the right panel job list.
7. Finally, define the email address for the report recipient, schedule a time, and set up the job rerun frequency. Now you are ready to execute a job by clicking to "Save & Run" button.

